

Automotive Hardware

- Wheel Studs
- Lug Nuts
- Oil Drain Plugs
- Drain Plug Gaskets
- Nuts & Bolts
- Tube Fittings
- Pipe Fittings
- Compression Fittings
- Drain Cocks
- Hose Connectors
- Vacuum Connectors
- Air Cleaner Wing Nuts
- Grease Fittings
- Cabin Air Filter Hardware
- Fuel System Parts
- Hose Clamps



JohnDow
DynamicTM
Automotive Fasteners & Supplies

Toll-Free
888-571-1141

www.dynamicautosupplies.com

TABLE OF CONTENTS

Air Cleaner Wing Nuts	22-23
Cabin Air Filter Hardware	23
Differential Plugs	15
Drain Cocks.....	21
Fittings	
Compression Fittings	18
Fuel Fittings	20
Inverted Flared Tube Fittings	17-18
Pipe Fittings	19-20
SAE Flared Tube Fittings	17
Fuel Line Assembly Tools	26
Fuel System Parts	24-25
General Shop Hardware	16
Grease Fittings	23
Hose Clamps	27
Hose Connectors - Plastic	21
Oil Drain Plug Gaskets.....	14-15
Oil Drain Plugs.....	11-13
Vacuum Caps	21
Vacuum Connectors - Soft.....	22
Vacuum Connectors - Special	22
Vacuum Hose Splice	22
Vacuum Tee Connectors	21
Wheel Nuts	4-5, 8-10
Wheel Studs	3, 6-8

WHEEL HARDWARE

Dynamic No.	Thread Size	Description	Pkg. Qty.	Pop Code	General** Application
WS-109	1/2 x 1-5/8	Wheel Stud	3	A	Jeep 1999-90 (F)
WS-138	1/2 x 1-17/32	Wheel Stud	3	B	Chevy/GMC Truck 2002-90 (R)
WS-159	1/2 x 1-5/8	Wheel Stud	3	B	Chevy/GMC Truck 2002-90 (R)
WS-219	1/2 x 1-29/32	Wheel Stud	3	B	Ford Truck 1996-80 (F)
WS-240	M12 x 32	Wheel Stud	3	B	Nissan Truck 2004-90 (F)
WS-253	M12 x 38.5	Wheel Stud	5	B	Toyota, Scion, Toyota, Truck, Isuzu, Truck 2002-90 (F-R)
WS-244	M12 x 37	Wheel Stud	3	A	Chrysler, Dodge 2009-90 (R)
WS-254	M12 x 41.5	Wheel Stud	5	AA	General Motors 2010-90 (F-R) Isuzu Truck 2008-90 (F-R)
WS-262	M12 x 37.5	Wheel Stud	3	B	Acura, Honda, Mitsubishi Truck, Isuzu Truck 2002-90 (F)
WS-266	M12 x 40	Wheel Stud	5	AA	Lexus, Scion, Toyota, Toyota Truck 2010-90 (F-R)
WS-269	M12 x 36	Wheel Stud	5	AA	Acura, Honda 2008-90 (F-R)
WS-285	M12 x 41	Wheel Stud	5	A	Hyundai, Mitsubishi Truck 2005-90 (R)
WS-275	M12 x 41.5	Wheel Stud	3	C	Mazda 2005-02 (F-R) Chrysler Dodge 2001-90 (F-R)
WS-303	9/16x 3-9/32	Wheel Stud	3	A	Ford Truck (E350, E450) 2010-90 (R)
WS-312	M12 x 44.5	Wheel Stud	3	A	Chrysler, Dodge, Toyota Truck, Isuzu Truck 2007-90 (R)
WS-320	M12 x 41.5	Wheel Stud	3	A	Nissan, Nissan Truck, Infiniti 2010-90 (R)
WS-327	M12 x 45.5	Wheel Stud	3	A	Chevy Truck/GMC Truck 2000-90 (F)
WS-340	M12 x 42	Wheel Stud	3	A	Suzuki 2010-89 (F-R)
WS-336	M12 x 37	Wheel Stud	3	B	Ford (Focus), Mazda, Mercury 2010-90 (F-R)
WS-360	M12 x 42	Wheel Stud	3	A	Acura, Honda 2008-86 (F-R)
WS-362	M12 x 42	Wheel Stud	3	A	Acura, Honda 1998-90 (F)
WS-364	1/2 x 1-15/32	Wheel Stud	3	B	Jeep 2002-89 (R)
WS-365	M12 x 51.5	Wheel Stud	3	B	Ford, Ford Truck 1998-83 (F)
WS-368	1/2 x 1-31/32	Wheel Stud	3	A	Lincoln (Towncar) 2010-91 ® Ford 2004-92 (R)

WHEEL HARDWARE

Dynamic No.	Thread Size	Description	Pkg. Qty.	Pop Code	General** Application
WS-369	M12 x 46	Wheel Stud	3	AA	Chrysler Mini Vans 2008-93 (F-R) Chrysler Pacifica 2008-04 (F-R)
WS-378	M12 x 42	Wheel Stud	3	AA	Infiniti, Nissan, Nissan Truck 2010-90 (F-R)
WS-404	M12 x 46	Wheel Stud	3	C	Infiniti, Nissan Truck 2010-93 (F)
WS-410	M12 x 46	Wheel Stud	3	B	Hyundai, Kia 2010-89 (F)
WS-414	M12 x 45	Wheel Stud	3	AA	Jeep, Mitsubishi, Mitsubishi Truck 2010-95 (F) Chrysler 2008-85 (F)
WS-428	M14 x 65.4	Wheel Stud	3	A	Cadillac, Chevy Truck, GMC Truck 2010-99 (F-R)
WS-434	M14 x 57.93	Wheel Stud	3	C	General Motors, GMC Truck 2010-99 (F-R)
WS-507	M12 x 44.8	Wheel Stud	3	B	Mazda, Hyundai, Kia 2010-04 (R)

Dynamic No.	Thread Size	Description	Type	Pkg. Qty.	Pop Code	General** Application
WN-16	1/2-20	Lug Nut	Std-Zinc	10	AA	Ford, Ford Truck, Lincoln, Mercury 2006-90
WN-27	1/2-20	Lug Nut	Std-Zinc	10	A	Dodge Truck 2003-97; Ford Truck 97-90
WN-52	9/16-18	Lug Nut	Std-Zinc	10	A	Ford Truck 2009-92; GMC Truck 1999-71
WN-53	9/16-18	Lug Nut	Std-Zinc	10	A	Chevy Truck/ GMC Truck 1999-71
WN-62	M12-1.5	Lug Nut	Std-Zinc	10	AA	Ford, Chrysler, Dodge, GMC Truck 2009-68
WN-63	M12-1.5	Lug Nut	Std-Zinc	10	AA	Chrysler 2009-78; GM 2007-79; Isuzu 2005-03
WN-64	M12-1.25	Lug Nut	Chrome	10	A	General Motors 2002-93; Subaru 2007-72
WN-65	M12-1.25	Lug Nut	Std-Zinc	10	AA	Ford 2002-93; Infiniti, Nissan 2007-68
WN-72	M12-1.25	Lug Nut	Std-Zinc	10	A	Mitsubishi 2010-68; Toyota 2009-68
WN-71	1/2-20	Lug Nut	Chrome	5	A	Ford 2006-67; General Motors 1991-85
WN-66	M12-1.5	Lug Nut	Std-Zinc	10	AA	Hyundai 2008-94; Mazda 2006-72
WN-74	M12-1.25	Lug Nut	Chrome	5	AA	Chrysler, Ford, GM, Honda 2009-68
WN-75	M12-1.5	Lug Nut	Chome	5	A	Honda 2008-80
WN-84	M12-1.5	Lug Nut	Chrome	5	A	General Motors 2009-76; Isuzu 2008-03
WN-93	1/2-20	Lug Nut	Std-Zinc	5	B	Ford, Ford Truck 2009-76; GM 2002-80

WHEEL HARDWARE

Dynamic No.	Thread Size	Description	Type	Pkg. Qty.	Pop Code	General** Application
WN-94	1/2-20	Lug Nut	Chrome	5	A	Ford Truck 2009-83; Mazda 2008-91
WN-109	M12-1.5	Lug Nut	External-Zinc	5	AA	Infiniti, Nissan 2008-78
WN-110	M14-1.5	Lug Nut	Std-Zinc	5	AA	General Motors 2009-82; Chrysler 2005-96; Isuzu 2000-96
WN-114	M12-1.25	Lug Nut	Chrome	5	AA	GM, Chevy/GMC Truck 2009-96
WN-115	M14-1.5	Lug Nut	External-Zinc	5	AA	Chevy/GMC Truck 2009-88; Astro, Safari 2005-03; Savana 2008-96
WN-117	M12-1.5	Lug Nut	Chrome	5	A	Lexus, Toyota 2009-83; Chrysler, Mitsubishi 2006-85.
WN-122	1/2-20	Lug Nut	Chrome	5	AA	Chrysler, Dodge 2009-63; Jeep 2009-66
WN-136	M12-1.5	Lug Nut	Chrome	5	A	Ford 2008-83; Lincoln, Mercury 1997-93
WN-138	M12-1.5	Lug Nut	Chrome	5	A	Acura, Honda 2008-86
WN-141	M12-1.5	Lug Nut	Chrome	5	A	Hyundai, Kia 2008-87; Mitsubishi 2006-83; Chrysler 2006-83
WN-144	M12-1.5	Lug Nut	Chrome	5	A	Honda 2008-80
WN-150	M12-1.5	Lug Nut	External-Zinc	10	AA	General Motors 2007-91
WN-163	1/2-20	Lug Nut	Std-Zinc	5	B	Ford 2009-83; Chrysler 2004-86
WN-172	M12-1.75	Lug Nut	Black	5	B	Ford Truck 2004-97
WN-181	M12-1.5	Lug Nut	Chrome	5	A	Chrysler, Dodge 2009-95
WN-196	M14-2.0	Lug Nut	Black	5	A	Ford Truck 2004-99
WN-253	M12-1.5	Lug Nut	Chrome	5	A	Hyundai 2008-05

** Application data is only a general information guideline. For specific application information go to www.dynamicautosupplies.com.

WHEEL HARDWARE



Box Qty.
3

WS-109

Thread
1/2"-20

Length
1-5/8"

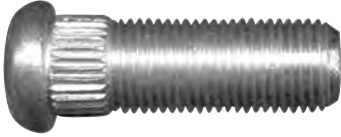


Box Qty.
5

WS-254

Thread
M12-1.50

Length
41.55mm



Box Qty.
3

WS-138

Thread
1/2"-20

Length
1-17/32"



Box Qty.
3

WS-262

Thread
M12-1.50

Length
37.55mm



Box Qty.
3

WS-159

Thread
1/2"-20

Length
1-5/8"



Box Qty.
5

WS-266

Thread
M12-1.50

Length
40mm



Box Qty.
3

WS-219

Thread
1/2"-20

Length
1-9/32"



Box Qty.
5

WS-269

Thread
M12-1.50

Length
36mm



Box Qty.
3

WS-240

Thread
M12-1.25

Length
32mm



Box Qty.
3

WS-275

Thread
M12-1.50

Length
41.5mm



Box Qty.
5

WS-244

Thread
M12-1.50

Length
37mm



Box Qty.
5

WS-285

Thread
M12-1.50

Length
41mm

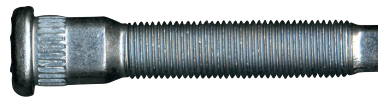


Box Qty.
5

WS-253

Thread
M12-1.50

Length
38.5mm



Box Qty.
3

WS-303

Thread
9/16"-18

Length
3-9/32"

WHEEL HARDWARE



Box Qty.
3

WS-312

Thread
M12-1.50

Length
44.5mm



Box Qty.
3

WS-364

Thread
1/2-20

Length
32mm



Box Qty.
3

WS-320

Thread
M12-1.25

Length
51.5mm



Box Qty.
3

WS-365

Thread
M12-1.50

Length
51.55mm



Box Qty.
3

WS-327

Thread
M14-1.50

Length
90.5mm



Box Qty.
3

WS-368

Thread
1/2-20

Length
1-31/32



Box Qty.
3

WS-336

Thread
M12-1.25

Length
37.5mm



Box Qty.
3

WS-369

Thread
M12-1.50

Length
46.55mm



Box Qty.
3

WS-340

Thread
M12-1.50

Length
42mm



Box Qty.
3

WS-378

Thread
M12-1.50

Length
42mm



Box Qty.
3

WS-360

Thread
M12-1.50

Length
42mm



Box Qty.
3

WS-404

Thread
M12-1.25

Length
46mm



Box Qty.
3

WS-362

Thread
M12-1.50

Length
34mm



Box Qty.
3

WS-410

Thread
M12-1.25

Length
46mm

WHEEL HARDWARE



Box Qty.
3

WS-414

Thread
M12-1.50

Length
45mm



Box Qty.
10

WN-16

Thread
1/2-20

Zinc

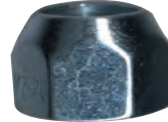


Box Qty.
3

WS-428

Thread
M14-1.50

Length
65.4mm



Box Qty.
10

WN-27

Thread
1/2-20

Zinc

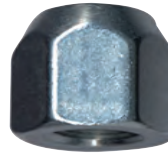


Box Qty.
3

WS-434

Thread
M14-1.50

Length
57.93mm



Box Qty.
10

WN-52

Thread
9/16-18

Zinc



Box Qty.
3

WS-507

Thread
M14-1.50

Length
44.8mm



Box Qty.
10

WN-53

Thread
9/16-18

Zinc



Box Qty.
10

WN-62

Thread
M12-1.50

Zinc



Box Qty.
10

WN-63

Thread
M12-1.50

Zinc



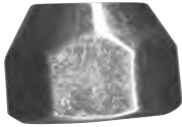
Box Qty.
10

WN-64

Thread
M12-1.25

Chrome

WHEEL HARDWARE



Box Qty.
10

WN-65

Thread
M12-1.25

Zinc



Box Qty.
5

WN-93

Thread
1/2-20

Zinc



Box Qty.
10

WN-66

Thread
M12-1.50

Zinc



Box Qty.
5

WN-94

Thread
1/2-20

Chrome



Box Qty.
5

WN-71

Thread
1/2-20

Chrome



Box Qty.
5

WN-109

Thread
M12-1.50

Zinc



Box Qty.
10

WN-72

Thread
M12-1.50

Zinc



Box Qty.
5

WN-110

Thread
M14-1.50

Zinc

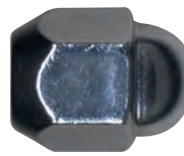


Box Qty.
5

WN-74

Thread
M12-1.50

Chrome



Box Qty.
5

WN-114

Thread
M12-1.25

Chrome



Box Qty.
5

WN-75

Thread
M12-1.50

Chrome



Box Qty.
5

WN-115

Thread
M14-1.50

Zinc



Box Qty.
5

WN-84

Thread
M12-1.50

Chrome



Box Qty.
5

WN-117

Thread
M12-1.50

Chrome

WHEEL HARDWARE



Box Qty.
5

WN-122

Thread
1/2-20

Chrome



Box Qty.
5

WN-172

Thread
M12-1.75

Black



Box Qty.
5

WN-136

Thread
M12-1.50

Chrome



Box Qty.
5

WN-181

Thread
M12-1.50

Chrome



Box Qty.
5

WN-138

Thread
M12-1.50

Chrome



Box Qty.
5

WN-196

Thread
M14-2.0

Black



Box Qty.
5

WN-141

Thread
M12-1.50

Chrome

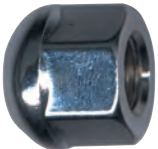


Box Qty.
5

WN-253

Thread
M12-1.50

Chrome



Box Qty.
5

WN-144

Thread
M12-1.50

Chrome



Box Qty.
10

WN-150

Thread
M12-1.50

Zinc



Box Qty.
5

WN-163

Thread
1/2-20

Zinc

OIL DRAIN PLUGS & Gaskets

Dynamic No.	Thread Size	Description	Pkg. Qty.	Pop Code	General** Application
DP-005	1/2-20	Standard Zinc	5	C	Ford 95-90; Ford Truck 96-75
DP-033	M14-1.50	Standard Zinc	5	AA	Acura 09-91; Honda 2010-96; Hyundai 2010-02; KIA 2010-01; Suzuki 08-06.
DP-034	M12-1.75	Pilot Point	5	A	General Motors 1996-90
DP-038	M12-1.25	Standard Zinc	5	B	Infiniti 2010-90; Lexus 2010-90; Nissan 2010-87; Pontiac 2010-09; Scion 09-05; Toyota 2010-90
DP-049	M12-1.25	Pilot Point	5	B	Lexus 2003-92; Toyota 2003-90; Toyota Truck 2003-92
DP-052	1/2-20	Pilot Point	5	B	Chevy, Chevy/GM Trk. 96-89; Dodge, Dodge Trk. 96-90; Olds 94-81; Pontiac 95-77
DP-053	M14-1.50	Pilot Point	5	A	Ford 97-90; Ford Truck 2000-90; KIA 2004-03; Lincoln 97-90; Mercury 97-90
DP-058	1/2-20	Pilot Point w/Gasket	5	B	Chrysler 99-93; Dodge 2003-95; Dodge Trk 2003-92; Eagle 97-93; Jeep 2006-98; Mitsubishi 99-98
DP-059	M12-1.75	Pilot Point w/Gasket	5	A	Ford 00-95; Ford Truck 00-95; Mazda Truck 99-97; Mercury 00-95
DP-075	M14-1.50	Standard Zinc	5	AA	Acura 08-86; Chrysler 05-88; Honda 2010-84; Mitsubishi 2010-85
DP-079	M12-1.75	Pilot Point w/Gasket	5	A	GM 96-92; Saturn 2002-00
DP-091	M12-1.75	Pilot Point w/Gasket (Magnetic)	5	AA	GM 07-99; Hummer 07-03; Isuzu Trk 08-97; Olds 05-97; Pontiac 07-97; Saturn 2007
DP-098	M14-1.50	Pilot Point w/Gasket	5	AA	Chrysler 02-95; Dodge 08-96; Dodge Truck 03-00; Jeep 03-99
DP-115	M14-1.50	Pilot Point w/Gasket	5	AA	Chrysler 09-01; Dodge 09-01; Ford (Focus, Fusion) 2010-07; Ford Trk 2010-05; Jeep 09-05; Mazda 2010-98
DP-156	M12-1.75	Pilot Point w/Gasket	5	A	GM 06-00; Ford 06-99; Ford Truck 06-99; Lincoln 2010-00; Mazda Trk 05-94; Mercury 2010-98
DP-161	M14-1.50	Pilot Point w/Gasket	5	AA	Ford 2010-01; Ford Truck 2010-98; Lincoln 2010-00; Mazda Trk 05-94; Mercury 2010-98

** Application data is only a general information guideline. For specific application information go to www.dynamicautosupplies.com.

Thread Repair Drain Plugs

Dynamic No.	Thread Size	Description	Pkg. Qty.
DP-1B	1/2"-20	Single Oversize	5
DP-2B	1/2"-20	Double Oversize	5
DP-3B	1/2"-20	Triple Oversize	5
DP-4B	1/2"-20	Single Oversize-Piggyback	5
DP-5B	1/2-20	Double Oversize-Piggyback	5
DP-28B	M14-1.50	Single Oversize	5
DP-29B	M12-1.75	Single Oversize	5
DP-30B	M12-1.25	Single Oversize	5

OIL DRAIN PLUGS & Gaskets



Box Qty.
5

DP-005

Size
1/2"-20

Standard Zinc



Box Qty.
5

DP-058

Size
1/2"-20

Pilot Point w/Gasket



Box Qty.
5

DP-033

Size
M14-1.50

Standard Zinc



Box Qty.
5

DP-059

Size
M12-1.75

Pilot Point w/Gasket



Box Qty.
5

DP-034

Size
M12-1.75

Pilot Point



Box Qty.
5

DP-075

Size
M14-1.50

Standard Zinc



Box Qty.
5

DP-038

Size
M12-1.25

Standard Zinc



Box Qty.
5

DP-079

Size
M12-1.75

Pilot Point w/Gasket



Box Qty.
5

DP-049

Size
M12-1.25

Pilot Point



Box Qty.
5

DP-091

Size
M12-1.75

Pilot Point w/Gasket
Magnetic



Box Qty.
5

DP-052

Size
1/2"-20

Pilot Point



Box Qty.
5

DP-098

Size
M14-1.50

Pilot Point w/Gasket



Box Qty.
5

DP-053

Size
M14-1.50

Pilot Point



Box Qty.
5

DP-115

Size
1/2"-20
M14-1.50

Pilot Point w/Gasket

OIL DRAIN PLUGS & Gaskets



Box Qty.
5

DP-156

Size
M12-1.75

Pilot Point w/Gasket



Box Qty.
5

DP-5B

Size
1/2-20
Double Oversize
Piggyback



Box Qty.
5

DP-161

Size
M14-1.50

Pilot Point w/Gasket



Box Qty.
5

DP-28B

Size
M14-1.50
Single
Oversize

Thread Repair Drain Plugs



Box Qty.
5

DP-29B

Size
M12-1.75
Single
Oversize



Box Qty.
5

DP-1B

Size
1/2"
Single
Oversize



Box Qty.
5

DP-30B

Size
M12-1.25
Single
Oversize



Box Qty.
5

DP-2B

Size
1/2-20
Double
Oversize



Box Qty.
5

DP-3B

Size
1/2-20
Triple
Oversize



Box Qty.
5

DP-4B

Size
1/2-20
Single Oversize
Piggyback

COPPER GASKETS

For high temp applications.
OE on some European cars.



Part No.	Size	Pkg. Qty.
DG-18B	1/2"	10
DG-25B	3/4" (VOLVO)	10
DG-19B	M12	10
DG-20B	M14	10
DG-24B	M14 (BMW)	10
DG-21B	M16	10
DG-22B	M18	10
DG-23B	M20	10
DG-62B	M22	10

COPPER CRUSH

OE on some Japanese cars.



Part No.	Size	Pkg. Qty.
DG-58B	1/2"	10
DG-12B	M12	10
DG-13B	M14	10
DG-14B	M16	10
DG-15B	M18	10
DG-16B	M20	10
DG-59B	M26	10

ALUMINUM

Used primarily for Honda
and Acura vehicles.



Part No.	Size	Pkg. Qty.
DG-26B	1/2"	10
DG-27B	M12	10
DG-35B	M12 BMW	10
DG-28B	M14	10
DG-29B	M14 (Dead Soft)	10
DG-78B	M14 Honda	10
DG-79B	M14 Mazda	10
DG-31B	M16.4	10
DG-32B	M18	10
DG-34B	M18 Honda, Kia, Volvo	10
DG-33B	M20 (Dead Soft)	10

RUBBER-METAL

O.E. and aftermarket styles.
Allows for imperfections on oil pan.



Part No.	Size	Pkg. Qty.
DG-60B	M12 (OE Style)	10
DG-9B	M12 (Aftermarket Style)	10
DG-61B	M14 (OE Style)	10
DG-10B	M14 (Aftermarket Style)	10
DG-66B	M16	10
DG-67B	M18	10
DG-81B	M20 (5.9L Dodge/Cummins)	10

FIBER GASKETS

Most common gasket used..



Part No.	Size	Pkg. Qty.
DG-1B	1/2"	10
DG-52B	1/2" Single Oversize	10
DG-53B	1/2" Double Oversize	10
DG-46B	M12	10
DG-47B	M12 Double Thick	10
DG-45B	M14	10
DG-48B	M14 Double Thick	10
DG-5B	M16	10
DG-11B	M16.4	10
DG-6B	M18	10
DG-7B	M20	10
DG55B	M22	10
DG-8B	M25	10

NYLON GASKETS

General use gasket..



Part No.	Size	Pkg. Qty.
DG-36B	1/2"	10
DG-38B	M12	10
DG-40B	M14	10
DG-41B	M16.4	10
DG-42B	M16.4	10
DG-43B	M18	10

NYLON GASKETS

Double Thick.



Part No.	Size	Pkg. Qty.
DG-37B	1/2"	10
DG-39B	M12	10
DG-71B	M14	10
DG-83B	M16	10
DG-84B	M18	10
DG-85B	M20	10
DG-86B	M22	10

NYLON LOCKING

Positions drain plug and
provides a tight seal..



Part No.	Size	Pkg. Qty.
DG-76B	1/2"	10
DG-77B	M12	10

POLY GASKETS



Part No.	Size	Pkg. Qty.
DG-2B	1/2"	10
DG-3B	M12	10
DG-4B	M14	10
DG-49B	M16.4	10
DG-50B	M18	10
DG-51B	M20	10

FOLDOVER GASKETS



Part No.	Size	Pkg. Qty.
DG-80B	M12—Copper	10
DG-75B	M12	10
DG-87B	M12	10
DG-73B	M14	10
DG-72B	M16.4	10
DG-74B	M20	10

GREEN SYNTHETIC

Allows for imperfections on oil pan..



Part No.	Size	Pkg. Qty.
DG-63B	M12	10
DG-64B	M18	10

RUBBER (Neoprene)



Part No.	Size	Pkg. Qty.
DG-17B Saturn	M12 (OE# 21007240)	10
DG-54B GM	M12	10
DG-65B Catera	M12 (OE#90528145)	10

METAL GRAPHITE

For Toyota applications..



Part No.	Size	Pkg. Qty.
DG-57B Toyota	M12	10

O-RING GASKETS



Part No.	Size	Pkg. Qty.
DG-68B	For DP-115	10
DG-69B	For DP-161	10
DG-70B	For DP-156	10
DG-82B	For DP-098	10

Differential Plugs

Steel-Square Countersunk



Part No.	Size	Pkg. Qty.
DP-31B	3/8" CS—5/16 Sq.	5
DP-32B	1/2" CS—3/8" Sq.	5
DP-33B	3/4" CS—1/2" Sq.	5
DP-34B	3/8" CS—3/8" Sq.	5

Rubber Plug—for Chrysler



Part No.	Size	Pkg. Qty.
DP-35B	Chrysler	1

GM Filter Plate



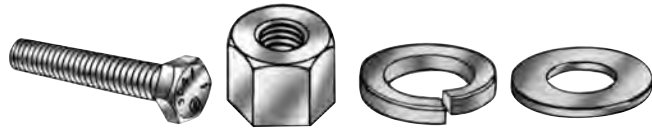
Part No.	Size	Pkg. Qty.
DP-100B	GM 2.5L (92-87)	1

USS Hex Bolts, Nuts, Washers – Grade 5

Part No.	Size	Description	Box Qty.
1001	1/4 x 1/2	Hex Bolt	50
1002	1/4 x 3/4	Hex Bolt	50
1003	1/4 x 1	Hex Bolt	50
1005	1/4-1-1/2	Hex Bolt	25
1026	5/16 x 3/4	Hex Bolt	25
1027	5/16 x 1	Hex Bolt	25
1028	5/16 x 1-1/2	Hex Bolt	25
1053	3/8 x 1	Hex Bolt	25
1054	3/8 x 1-1/4	Hex Bolt	25
1055	3/8 x 1-1/2	Hex Bolt	25
1058	3/8 x 2	Hex Bolt	15
1076	1/4	Hex Nut	100
1077	5/16	Hex Nut	100
1078	3/8	Hex Nut	50
1084	1/4	Flat Washer	100
1085	5/16	Flat Washer	100
1086	3/8	Flat Washer	50
1093	1/4	Lock Washer	100
1094	5/16	Lock Washer	100
1095	3/8	Lock Washer	50

USS Cotter Pins

Part No.	Size	Description	Box Qty.
3014	3/32 x 1	Cotter Pin	100
3016	3/32 x 1-1/2	Cotter Pin	100
3024	1/8 x 1	Cotter Pin	100
3026	1/8 x 1-1/2	Cotter Pin	100
3027	1/8 x 2	Cotter Pin	100



Metric Hex Bolts, Nuts, Washers – Class 8

Part No.	Size	Description	Box Qty.
2001	M6 x 12	Hex Bolt	50
2002	M6 x 16	Hex Bolt	50
2003	M6 x 20	Hex Bolt	50
2004	M6 x 25	Hex Bolt	25
2005	M6 x 30	Hex Bolt	25
2006	M6 x 35	Hex Bolt	15
2026	M8 x 12	Hex Bolt	25
2027	M8 x 16	Hex Bolt	25
2028	M8 x 20	Hex Bolt	25
2029	M8 x 25	Hex Bolt	25
2030	M8 x 30	Hex Bolt	25
2031	M8 x 35	Hex Bolt	15
2053	M10 x 20	Hex Bolt	25
2054	M10 x 25	Hex Bolt	25
2055	M10 x 30	Hex Bolt	25
2056	M10 x 35	Hex Bolt	15
2076	M6	Hex Nut	100
2077	M8	Hex Nut	100
2078	M10	Hex Nut	50
2085	M6	Flat Washer	100
2086	M8	Flat Washer	100
2087	M10	Flat Washer	50
2093	M6	Lock Washer	100
2094	M8	Lock Washer	100
2095	M10	Lock Washer	100

General Shop Hardware Installer Assortment



No. DYN-G1

**25 SKU's Metric Fasteners
(1,345 pcs)**

**20 SKU's USS Fasteners
(1,090 pcs)**

**5 SKU's Cotter Pins
(500 pcs)**

Includes heavy-duty Wall Rack.

S.A.E. FLARED TUBE FITTINGS

Short Nut

Part No.	Tube Size	Pkg. Qty.
BR-41B	3/16"	5
BR-41C	1/4"	5
BR-41D	5/16"	5
BR-41E	3/8"	5



Long Nut

Part No.	Tube Size	Pkg. Qty.
BR-40C	1/4"	5
BR-40D	5/16"	5
BR-40E	3/8"	5



Union

Part No.	Tube Size	Pkg. Qty.
BR-42B	3/16"	5
BR-42F	1/2"	5



Female Connector

Part No.	Tube Size	Thread Size	Pkg. Qty.
BR-46C	1/4"	1/8"	5
BR-46D	5/16"	1/8"	5



Male Connector

Part No.	Tube Size	Thread Size	Pkg. Qty.
BR-48B	3/16"	1/8"	5
BR-48C	1/4"	1/8"	5
BR-48D	5/16"	1/8"	5
BR-48DD	5/16"	1/4"	5
BR-48E	3/8"	1/8"	5
BR-48EE	3/8"	1/4"	5
BR-48EEE	3/8"	3/8"	5



Male Elbow

Part No.	Tube Size	Thread Size	Pkg. Qty.
BR-49B	3/16"	1/8"	5
BR-49C	1/4"	1/8"	5
BR-49EE	3/8"	1/4"	5



INVERTED FLARED TUBE FITTINGS

Solid Plug

Part No.	Tube Size	Pkg. Qty.
BR-500B	3/16"	5
BR-500C	1/4"	5
BR-500D	5/16"	5
BR-500E	3/8"	5



Standard Steel Nut

Part No.	Tube Size	Thread Size	Pkg. Qty.
BR-105B	3/16"	3/16	5
BR-105C	1/4"	1/4	5
BR-105D	5/16"	5/16"	5
BR-105E	3/8"	3/8"	5



Long Steel Nut

Part No.	Tube Size	Thread Size	Pkg. Qty.
BR-105BL	3/16"		5
BR-105CL	1/4"		5



Male Elbow

Part No.	Tube Size	Thread Size	Pkg. Qty.
BR-400B	3/16"	1/8"	5
BR-400C	1/4"	1/8"	5
BR-400CC	1/4"	1/4"	5
BR-400D	5/16"	1/8"	5
BR-400DD	5/16"	1/4"	5
BR-400E	3/8"	1/4"	5



Union

Part No.	Tube Size	Pkg. Qty.
BR-300B	3/16"	5
BR-300C	1/4"	5
BR-300D	5/16"	5
BR-300E	3/8"	5



Union Tee

Part No.	Tube Size	Pkg. Qty.
BR-702BB	3/16"	5
BR-702C	1/4"	5
BR-702D	5/16"	5
BR-702E	3/8"	5



INVERTED FLARED TUBE FITTINGS

Male Connector

Part No.	Tube Size	Thread Size	Pkg. Qty.
BR-200B	3/16"	1/8"	5
BR-200C	1/4"	1/8"	5
BR-200CC	1/4"	1/4"	5
BR-200D	5/16"	1/8"	5
BR-200DD	5/16"	1/4"	5
BR-200EEE	3/8"	1/8"	5
BR-200E	3/8"	1/4"	5
BR-200EE	3/8"	3/8"	5
BR-200F	1/2"	3/8"	5
BR-200FF	1/2"	1/2"	5



Transmission Coolant Adapter

Part No.	Tube Size	Thread Size	Pkg. Qty.
BR-107FR	3/8"	3/8"	5
BR-107UR	5/16"	5/16"	5



COMPRESSION FITTINGS

Double Compression-Nut

Part No.	Tube Size	Pkg. Qty.
BR-11A	1/8"	5
BR-11B	3/16"	5
BR-11C	1/4"	5
BR-11D	5/16"	5



Sleeve

Part No.	Tube Size	Pkg. Qty.
BR-60A	1/8"	5
BR-60B	3/16"	5
BR-60C	1/4"	5
BR-60D	5/16"	5
BR-60E	3/8"	5
BR-60F	1/2"	5



Nut

Part No.	Tube Size	Pkg. Qty.
BR-61A	1/8"	5
BR-61B	3/16"	5
BR-61C	1/4"	5
BR-61D	5/16"	5
BR-61E	3/8"	5



COMPRESSION FITTINGS

Union

Part No.	Tube Size	Pkg. Qty.
BR-62A	1/8"	5
BR-62B	3/16"	5
BR-62C	1/4"	5
BR-62D	5/16"	5
BR-62E	3/8"	5
BR-62F	1/2"	5
BR-62G	5/8"	5



Union Tee

Part No.	Tube Size	Pkg. Qty.
BR-64A	1/8"	5
BR-64B	3/16"	5
BR-64C	1/4"	5
BR-64D	5/16"	5
BR-64E	3/8"	5



Male Connector

Part No.	Tube Size	Thread Size	Pkg. Qty.
BR-68A	1/8"	1/8"	5
BR-68B	3/16"	1/8"	5
BR-68C	1/4"	1/8"	5
BR-68CC	1/4"	1/4"	5
BR-68D	5/16"	1/8"	5
BR-68DD	5/16"	1/4"	5
BR-68E	3/8"	1/8"	5
BR-68EE	3/8"	1/4"	5
BR-68F	1/2"	3/8"	5



Male Elbow

Part No.	Tube Size	Thread Size	Pkg. Qty.
BR-69A	1/8"	1/8"	5
BR-69B	3/16"	1/8"	5
BR-69C	1/4"	1/8"	5
BR-69CC	1/4"	1/4"	5
BR-69D	5/16"	1/8"	5
BR-69EE	3/8"	1/4"	5



PIPE FITTINGS

Coupling

Part No.	Thread Size	Pkg. Qty.
BR-103A	1/8"	5
BR-103C	1/4"	5
BR-103E	3/8"	5
BR-103F	1/2"	5



Female End Cap

Part No.	Thread Size	Pkg. Qty.
BR-108A	1/8"	5
BR-108C	1/4"	5
BR-108E	3/8"	5
BR-108F	1/2"	5



Hex Head Plug

Part No.	Thread Size	Pkg. Qty.
BR-121A	1/8"	5
BR-121C	1/4"	5
BR-121E	3/8"	5
BR-121F	1/2"	5
BR-121H	3/4"	5



Bushings

Part No.	Male Thread	Female Thread	Pkg. Qty.
BR-110C	1/4"	1/8"	5
BR-110E	3/8"	1/8"	5
BR-110EE	3/8"	1/4"	5
BR-110FA	1/2"	1/8"	5
BR-110FF	1/2"	1/4"	5
BR-110F	1/2"	3/8"	5
BR-110H	3/4"	3/8"	5
BR-110HH	3/4"	1/2"	5



Close Nipple

Part No.	Thread Size	Length	Pkg. Qty.
BR-112A	1/8"	1/4"	5
BR-112C	1/4"	7/8"	5
BR-112E	3/8"	1"	5
BR-112F	1/2"	1-1/8"	5



PIPE FITTINGS

Elbow

Part No.	Thread Size	Pkg. Qty.
BR-100A	1/8"	5
BR-100C	1/4"	5
BR-100E	3/8"	5
BR-100F	1/2"	5



Tee

Part No.	Thread Size	Pkg. Qty.
BR-101A	1/8"	5
BR-101C	1/4"	5
BR-101E	3/8"	5
BR-101F	1/2"	5



Cross

Part No.	Thread Size	Pkg. Qty.
BR-102A	1/8"	5
BR-102C	1/4"	5
BR-102E	3/8"	5
BR-102F	1/2"	5



Long Nipple

Part No.	Thread Size	Length	Pkg. Qty.
BR-113A1	1/8"	1-1/2"	5
BR-113A2	1/8"	2"	5
BR-113A3	1/8"	2-1/2"	5
BR-113A4	1/8"	3"	5
BR-113C1	1/4"	1-1/2"	5
BR-113C2	1/4"	2"	5
BR-113C3	1/4"	2-1/2"	5
BR-113C4	1/4"	3"	5
BR-113E1	3/8"	1-1/2"	5
BR-113E2	3/8"	2"	5
BR-113E3	3/8"	2-1/2"	5
BR-113E4	3/8"	3"	5
BR-113F1	1/2"	1-1/2"	5
BR-113F2	1/2"	2"	5
BR-113F3	1/2"	2-1/2"	5
BR-113F4	1/2"	3"	5



PIPE FITTINGS

Street Elbow

Part No.	Thread Size	Thread Size	Pkg. Qty.
BR-116A	1/8"	1/8"	5
BR-116C	1/4"	1/4"	5
BR-116CC	1/4"	1/8"	5
BR-116E	3/8"	3/8"	5
BR-116F	1/2"	1/2"	5



Reduced Coupling

Part No.	Thread Size	Thread Size	Pkg. Qty.
BR-10A	1/4"	1/8"	5
BR-10CC	3/8"	1/8"	5
BR-10C	3/8"	1/4"	5
BR-10E	1/2"	3/8"	5



Adapter

Part No.	Female Size	Male Size	Pkg. Qty.
BR-120A	1/8"	1/8"	5
BR-120CC	1/4"	1/8"	5
BR-120C	1/4"	1/4"	5
BR-120EE	3/8"	1/4"	5
BR-120E	3/8"	3/8"	5
BR-120F	1/2"	1/2"	5



Square Head Plug

Part No.	Thread Size	Pkg. Qty.
BR-109A	1/8"	5
BR-109C	1/4"	5
BR-109E	3/8"	5
BR-109F	1/2"	5



Hex Nipple

Part No.	Thread Size	Thread Size	Pkg. Qty.
BR-122A	1/8"	1/8"	5
BR-123C	1/4"	1/8"	5
BR-122C	1/4"	1/4"	5
BR-123E	3/8"	1/4"	5
BR-122E	3/8"	3/8"	5



PIPE FITTINGS

45 Street Elbow

Part No.	Thread Size	Pkg. Qty.
BR-124A	1/8"	5
BR-124C	1/4"	5
BR-124E	3/8"	5
BR-124F	1/2"	5



Street Tee

Part No.	Thread Size	Pkg. Qty.
BR-127A	1/8"	5
BR-127C	1/4"	5
BR-127E	3/8"	5



FUEL FITTINGS

Barbed Hose Fittings

Pipe Fittings

Part No.	Tube Size	Thread Size	Pkg. Qty.
BR-1705	3/8"	1/8"	5
BR-1709	1/4"	1/4"	5
BR-1710	1/4"	1/8"	5
BR-1711	3/8"	3/8"	5
BR-1716	3/8"	1/4"	5
BR-1719	5/16"	1/4"	5
BR-1734	5/16"	1/8"	5
BR-2659	3/16"	1/8"	5



Barbed Hose Fittings

Male Inverted Flare – 45 Deg.

Part No.	Tube Size	Hose I.D.	Pkg. Qty.
BR-1726	3/8"	5/16"	5
BR-1742	1/4"	5/16"	5
BR-1746	5/16"	3/8"	5



DRAIN COCKS

Back Seating Drain Cock

Part No.	Thread Size	Pkg. Qty.
BR-135	1/8"	5
BR-145	1/4"	5



Plastic Drain Cock – Threaded

Part No.	Thread Size	Pkg. Qty.
DC-1122	5/16" (7/16-20) GM:3042160	5



Plastic Drain Cock – Push-In

Part No.	Thread Size	Pkg. Qty.
DC-1109	1/4" x 1-1/2" GM: 3051041 Ford: E1FZ-8115A	5
DC-1108	1/4" x 1-7/8" Ford: E57H-8115A	5



Plastic Drain Cock – Metric

Part No.	Thread Size	Pkg. Qty.
DC-1110	M12-1.25 Toyota: 90910-09052 Honda: 19011-PA004	5
DC-1112	M14-1.25 Toyota: 90910-09054 Honda: 19011-671-000	5
DC-1114	M10-1.25 Nissan: 21480-R0100 Subaru: 7451-24050	5
DC-1116	M14-1.25 Nissan: 21980-D0100 Subaru: 7451-24010	5



Plastic Drain Cock—Chrysler

Part No.	Thread Size	Pkg. Qty.
DC-1121		5



HOSE CONNECTORS

Adapter – Straight

Part No.	Size	Pkg. Qty.
HA-24	3/4" x 1/2"	5
HA-28	5/8" x 1/2"	5
HA-48	3/4" x 5/8"	5



Connector – Elbow

Part No.	Size	Pkg. Qty.
HE-12	1/2" x 1/2"	5
HE-34	3/4" x 3/4"	5
HE-58	5/8" x 5/8"	5

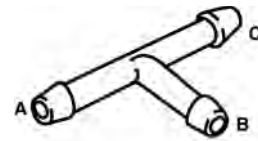


Connector – Straight

Part No.	Size	Pkg. Qty.
HS-12	1/2" x 1/2"	5
HS-34	3/4" x 3/4"	5
HS-58	5/8" x 5/8"	5



TEE CONNECTORS



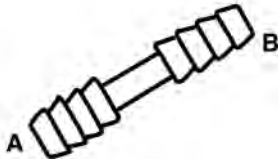
Part No.	A	B	C	Pkg. Qty.
3001B	1/8"	1/8"	1/8"	10
3002B	3/16"	3/16"	3/16"	10
3003B	1/4"	1/4"	1/4"	10
3004B	5/16"	5/16"	5/16"	10
3005B	3/8"	3/8"	3/8"	10
3006B	3/16"	3/16"	1/8"	10
3007B	1/8"	1/8"	3/16"	10
3008B	1/4"	3/16"	1/4"	10
3009B	3/16"	3/16"	1/4"	10
3010B	3/16"	1/8"	3/16"	10
3011B	3/8"	1/4"	3/8"	10
3012B	5/32"	5/32"	5/32"	10

VACUUM CAPS

Part	Tube	Pkg.
3025B	3/16"	10
3026B	1/4"	10
3029B	5/16"	10
3030B	3/8"	10
3031B	1/8"	10



HOSE SPLICE



Part No.	A	B	Pkg. Qty.
3013B	1/8"	1/8"	10
3014B	3/16"	3/16"	10
3015B	1/4"	1/4"	10
3016B	5/16"	5/16"	10
3017B	3/8"	3/8"	10
3018B	1/8"	3/16"	10
3019B	1/8"	1/4"	10
3020B	3/16"	1/4"	10
3021B	3/8"	1/4"	10

MISC. CONNECTORS

Part No.	Tube Size	Pkg. Qty.
----------	-----------	-----------

Restrictor Connector

Used on many Ford and GM systems to prevent gasoline flow into vacuum lines.

3022B	3/16"	10
-------	-------	----



Four-Way Tee

For Ford and GM

3023B	3/16"	10
-------	-------	----



Five-Way Tee

For Ford

3024B	3/16"	10
-------	-------	----



Universal Breakaway Tee

3027B	1/8"-1/4"-3/8"	10
-------	----------------	----



Universal Breakaway Connector

3028B	1/8"-1/4"-3/8"	10
-------	----------------	----



SOFT VACUUM CONNECTORS

Connector

Part No.	Size	Pkg. Qty.
DY-3400B	7/64" x 1/8"	10
DY-3401B	7/64" x 7/32"	10
DY-3402B	1/8" x 5/32"	10
DY-3403B	1/8" x 7/32"	10
DY-3404B	9/64" x 7/32"	10
DY-3405B	5/32" x 1/8"	10
DY-3406B	1/8" x 11/64"	10



Elbow

Part No.	Size	Pkg. Qty.
DY-3408B	1/8" x 5/32"	10
DY-3409B	1/8" x 1/8"	10
DY-3410B	1/8" x 11/64"	10
DY-3411B	9/64" x 5/32"	10



Misc.

Part No.	Size	Pkg. Qty.
DY-3412B	1/8" Splitter Tee	10
DY-3414B	3/16" Vacuum Tee	10
DY-3415B	7/64" Vacuum Tee	10
DY-3418B	5/32" Vacuum Line	1



AIR CLEANER WING NUTS

Part No.	Size	Pkg. Qty.
Wing Nut—Late GM Cars & Trucks		
600	6mm	5
Wing Nut—Buick 1977 & Up		
601	8mm	5
Wing Nut—Ford (Self Tapping)		
602	1/4"	5
Wing Nut—Chrysler 1984 & Up		
603	6mm	5
Wing Nut—Ford Products		
604	1/4"-20	5
Wing Nut—Chrysler (Self Tapping) 1978 & Up		
605	1/4"	5



Air Cleaner Wing Nuts
Continued Next Page

AIR CLEANER WING NUTS – Cont'd.

Part No.	Size	Pkg. Qty.
Wing Nut—Ford Escort & Mercury Lynx		
606	6mm x 1.0	5
Wing Nut—Nissan Products		
609	6mm	5
Screw—Ford Products		
610	1/4"-20 x 3/4"	5
Screw—Ford Products		
611	1/4"-20 x 1"	5
Universal Stud & Nut		
613	1/4"-20 x 4-1/2"	5



GREASE FITTINGS

1/8" Pipe Thread

Part No.	Description	Pkg. Qty.
DY-1861	Male Straight	10
DY-1862	Male 45 Elbow	10
DY-1863	Male 90 Elbow	10



1/4-28 Thread

Part No.	Description	Pkg. Qty.
DY-1851	Short Straight	10
DY-1852	Short 45 Elbow	10
DY-1853	Short 90 Elbow	10
DY-1854	Long Straight	10



Metric Thread

Part No.	Description	Pkg. Qty.
Male Straight		
DY-1855	M6-1.0	10
DY-1865	M8-1.0	10
DY-1896	M10-1.0	10
Male 45 Elbow		
DY-1856	M6-1.0	10
DY-1866	M8-1.0	10
DY-1897	M10-1.0	10
Male 45 Elbow		
DY-1857	M6-1.0	10
DY-1867	M8-1.0	10
DY-1898	M10-1.0	10



CABIN AIR FILTER HARDWARE

Part No.	Size	Pkg. Qty.
Screw		
Ford Taurus/Sable		
CA-1	4mm	10
Self Tapping Screw		
Ford Contour/Mystique		
OEM: W700501-5303		
CA-2		10
Black Plastic Cap		
Ford Contour/Mystique 1995-On		
OEM: W701223-S300		
CA-3		10
Retainer Clip		
Ford Taurus/Sable 1996-On		
OEM: F6DZ-5402316A		
CA-4		10
Push On Clip		
Ford Taurus/Sable 1995-On		
OEM: N8085342-S307		
CA-5		10
Plastic Screw		
Ford Taurus/Sable 1996-On		
OEM: W701649-S		
CA-6		10
Screw Rivet		
General Motors 1995-On		
OEM: 2664092		
CA-7		10
Screw Rivet		
General Motors 1987-On		
OEM: 153182		
CA-8		10
Screw Clip		
General Motors 1997-On		
OEM: 10281610		
CA-9		10
Screw In Clip		
Ford Taurus/Sable 1995-On		
OEM: W703842-S300		
CA-10		10
Retainer Screw		
Lincoln Continental		
CA-11		10
Cowl Retainer		
Olds Alero/Chevy Malibu		
CA-12		10
Cowl Retainer		
Lincoln LS/ Ford T-Bird 1999-On		
OEM: W7005956-S3000		
CA-13		10



Connectors – Straight

Quick Disconnect—(O.E. Style)



Part No.	Female Connector	Male Connect To Fuel Line	Pkg. Qty.	Retainer
FCS-48	1/4"	5/16"	5	N/A
FCS-58	5/16"	5/16"	5	CL-103B
FCS-68	3/8"	5/16"	5	CL-102B
FCS-510	5/16"	3/8"	5	CL-103B
FCS-610	3/8"	3/8"	5	CL-102B

Posi Lock Connector



Part No.	Female Connector	Male Connect To Fuel Line	Pkg. Qty.	Retainer
PCS-58	5/16"	5/16"	5	CL-103B
PCS-610	3/8"	3/8"	5	CL-102B

O.E.M Fuel Line

Nylon Fuel Line Tubing

Part No.	Tube Size	Pkg. Qty.
FL-14	1/4"	25'
FL-56	5/16"	25'
FL-38	3/8"	25'



GM Fuel Sender Adapters

To Rubber Fuel Line

Part No.	Female	Male	Pkg. Qty.
FH-14	14mm	5/16"	5
FH-16	16mm	3/8"	5



To Nylon Fuel Line

Part No.	Female	Male	Pkg. Qty.
FS-14	14mm	5/16"	5
FS-16	16mm	3/8"	5



Clamps

360 For Nylon & Rubber Hose

Part No.	Size	Pkg. Qty.
CSO-14	1/4"	10
CSO-56	5/16" (8mm)	10
CSO-38	3/8" (10mm)	10



Fuel Injection Clamps

Part No.	Size	Pkg. Qty.
HCM-4F	1/4"	10
HCM-6F	5/16"	10
HCM-8F	3/8"	10



Connectors – 90 Degree Bend

Quick Disconnect—(O.E. Style)



Part No.	Female Connector	Male Connect To Fuel Line	Pkg. Qty.	Retainer
FCB-58	5/16"	5/16"	5	CL-103B
FCB-68	3/8"	5/16"	5	CL-102B
FCB-510	5/16"	3/8"	5	CL-103B
FCB-610	3/8"	3/8"	5	CL-102B

Posi Lock Connector



Part No.	Female Connector	Male Connect To Fuel Line	Pkg. Qty.	Retainer
PCB-58	5/16"	5/16"	5	CL-103B
PCB-610	3/8"	3/8"	5	CL-102B

Fittings

Part No.	Thread Size	Pkg. Qty.
----------	-------------	-----------

COMPRESSION UNION – Nylon to Nylon

BR-62CNN	1/4"	5
BR-62DNN	5/16"	5
BR-62ENN	3/8"	5



COMPRESSION UNION – Nylon to Steel

BR-62CNS	1/4"	5
BR-62DNS	5/16"	5
BR-62ENS	3/8"	5



Brass Splice Joiners For Nylon Fuel Line

BB-14	1/4"	5
BB-516	5/16"	5
BB-38	3/8"	5



Barbed Connector For Rubber Hose

BFC-3	3/16"	5
BFC-4	1/4"	5
BFC-5	5/16"	5
BFC-6	3/8"	5



Fuel Line Adapters

Steel To Nylon or Rubber Line



Part No.	Female	Male	Pkg. Qty.
AL-101B	1/4"	1/4"	5
AL-102B	5/16"	5/16"	5
AL-103B	3/8"	3/8"	5

Connects GM to Nylon or Rubber



AL-104B	14mm	5/16"	5
AL-105B	16mm	3/8"	5

Connects Nylon to Rubber Hose



AL-107B	3/8"	3/8"	5
---------	------	------	---

Fuel Sending Unit Repair Lines

Part No.	Size Line	Length	Pkg. Qty.
----------	-----------	--------	-----------

90 Steel Line w/16mm GM Fitting



SL-6104B	3/8"	4"	5
----------	------	----	---

180 Fuel Filter Repair Line w/16mm GM Fitting



SL-6188B	3/8"	6-1/2"	5
----------	------	--------	---

O-Rings

Viton O-Rings For Steel Fuel Repair Lines



OR-38	3/8	10
OR-516	5/16"	10

Steel Line Repair Lines

14mm with Fitting and O-Ring



Part No.	Size Line	Length	Pkg. Qty.
FL-510B	5/16"	9"	5
FL-518B	5/16"	18"	5
FL-530B	5/16"	30"	5

16mm with Fitting and O-Ring

FL-610B	3/8"	9"	5
FL-618B	3/8"	18"	5
FL-630B	3/8"	30"	5

Nylon Fuel Line Repair Kits

Part No.	Female	Male	Pkg. Qty.
----------	--------	------	-----------

Straight – 12" Length



NL-6308B	3/8"	5/16"	5
NL-6310B	3/8"	3/8"	5
N L-6508B	5/16"	5/16"	5
NL-6510B	5/16"	3/8"	5

90 Degree – 12" Length



NL-6390B	3/8"	5/16"	5
NL-6398B	3/8"	3/8"	5
NL-6598B	5/16"	5/16"	5
NL-6590B	5/16"	3/8"	5

Nylon Splices For Fuel Line

Part No.	Size Line	Length	Pkg. Qty.
----------	-----------	--------	-----------

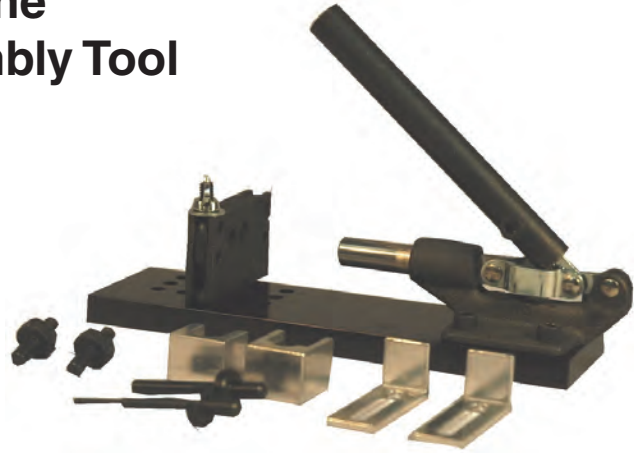


NL-9318B	3/8"	18"	5
NL-9518B	5/16"	18"	5

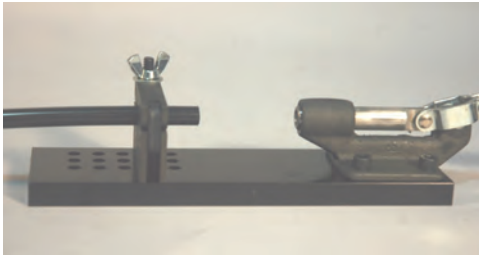
Fuel Line Quick Assembly Tool

Makes nylon fuel line repair fast and easy.

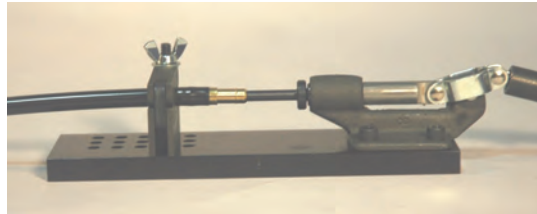
- Installs straight or 90 degree connectors and barbed fittings.
- Saves time and money.
- Create custom size lines—any length.
- 11 piece tool comes in durable plastic case.



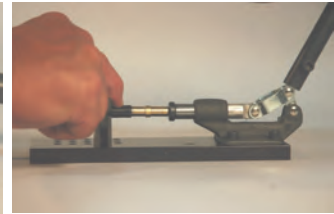
No. AFP-1000



Step One:
Secure fuel line (5/16" or 3/8") into fuel line holder.



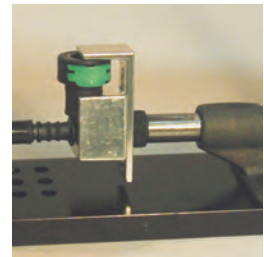
Step Two:
Position fitting or connector to be installed in the end of the hose and move the handle forward pushing the fitting into the hose.



Step Three:
Remove the hose and turn it around and repeat Step Two with another fitting or connector.

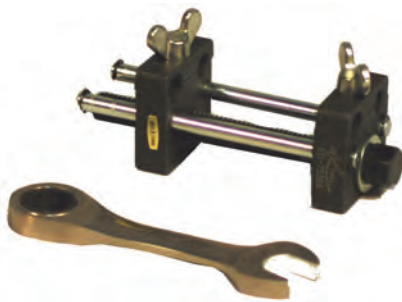


For 90 degree connectors use the special fitting bracket.



Fuel Line Assembly Tool

Attaches fuel line repair assemblies to nylon fuel line on the vehicle.



Repairs splits in nylon fuel lines.
Works with 5/16" and 3/8" nylon fuel line.
Can be used on or off the car.
Light and portable.
Works great in tight spaces.
Includes 9/16" ratcheting wrench.
Includes durable blow-molded case.

No. ATF-2000

Quick Disconnect Retainer Removal Tool

For 5/16" & 3/8"



No. DT-1

Cambridge 2300 Series

Stainless Steel 1/2" Band & Housing w/Zinc Plated Screws

Part No.	Size	Pkg Qty
HC2-6P	#6	10
HC2-8P	#8	10
HC2-10P	#10	10
HC2-12P	#12	10
HC2-16P	#16	10
HC2-20P	#20	10
HC2-24P	#24	10
HC2-32P	#32	10
HC2-36P	#36	10



Cambridge Mini 1300 Series

Stainless Steel 1/2" Band & Housing w/Zinc Plated Screws

HCM-4P	#4	10
HCM-6P	#6	10



Cambridge 3300 Series

Stainless Steel 9/16" Band & Housing w/Zinc Plated Screws

HC3-6P	#6	10
HC3-8P	#8	10
HC3-10P	#10	10
HC3-12P	#12	10
HC3-16P	#16	10
HC3-20P	#20	10
HC3-24P	#24	10
HC3-32P	#32	10
HC3-36P	#36	10



Cambridge 3300 Series

All Stainless Steel 1/2" Band & Housing Screws

HC2-6S	#6	10
HC2-8S	#8	10
HC2-10S	#10	10
HC2-12S	#12	10
HC2-16S	#16	10
HC2-20S	#20	10
HC2-24S	#24	10
HC2-32S	#32	10
HC2-36S	#36	10



Cambridge Fuel Injection Clamps

5/16" Zinc Plated Band

HCM-4F	1/4"	10
HCM-6F	5/16"	10
HCM-8F	3/8"	10



Oetiker Stepless—Ear Clamps

- 60 Degree clamping for uniform compression.
- Easy and fast installation with Oetiker #2004 tool.
- Ideal for flexible and thin wall hoses.
- OEM on most U.S. autos.
- Used in most industrial hose applications.



Part No.	Size	Application	Pkg. Qty.
CSO-14	9/32"	1/4" Fuel Line	10
CSO-38	7/16"	3/8" Fuel Line	10
CSO-40	17/32"	1/4" Fuel Line; 3/8" Shop air hose	10
CSO-50	9/16"	5/16" Oil Cooler hose	10
CSO-52	5/8"	5/16" Fuel Line ; 1/4" Shop air hose	10
CSO-55	11/32"	5/32" Vacuum; Emission Hose	10
CSO-56	3/8"	5/16" Nylon Fuel Hose	10
CSO-57	11/16"	3/8" Fuse Line; 3/8" Shop air hose	10
CSO-60	23/32"	3/16" Fuel Line	10
CSO-70	13/16"	1/2" Heater Hose; 3/8" Air Brake Hose	10
CSO-80	15/16"	5/8" Heater Hose; 1/2" Air Brake Hose	10
CSO-100	1-1/16"	3/4" Heater Hose	10

Oetiker Clamp Tool



Side Jaw Pincers Used on 360 Degree Oetiker Clamps

This dual purpose, side jaw design allows clamps to be applied or removed in confined areas with pincers held parallel or perpendicular to the hose. Also used like standard jaw pincers.

Part No. 2004



**A Division of
JohnDow Industries, Inc.**

151 Snyder Avenue • Barberton, OH 44203

Toll-Free Phone: 888.571.1141

Fax: 330.753.6419

Web: www.dynamicautosupplies.com

Email: customerservice@johndow.com